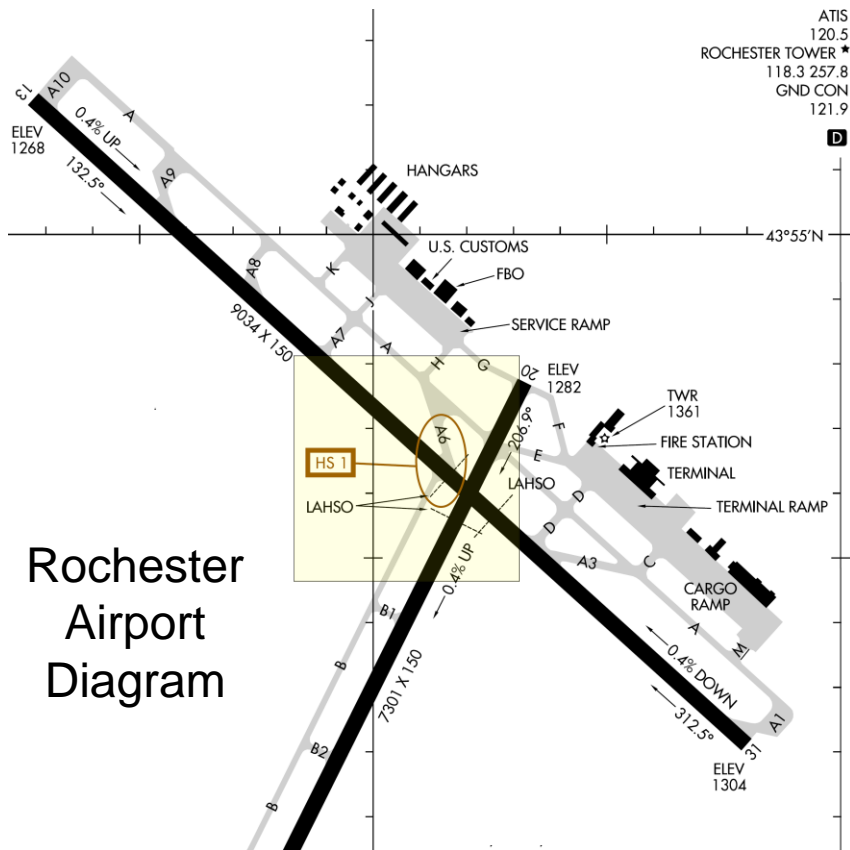
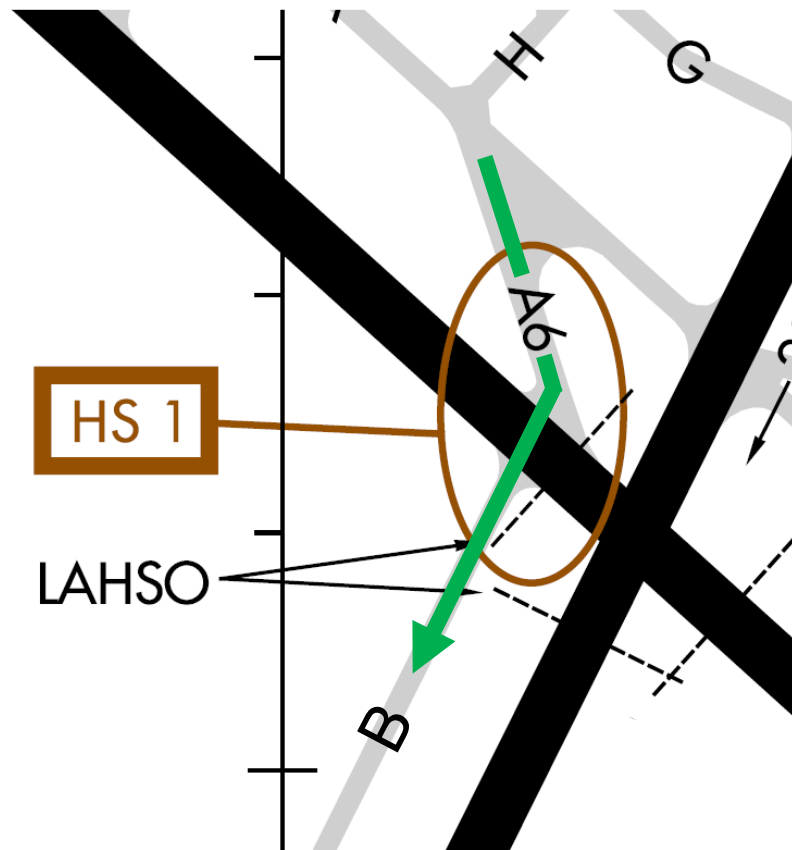


# Want to avoid an encounter with the MSP FAA Flight Standard's Office?



Rochester  
Airport  
Diagram



## Beware of HS 1 (Hot Spot 1)

**Problem:** aircraft taxiing from FBO ramp to RWY 02 fail to make partial right turn from Taxiway A6 onto Taxiway B.

**Solution:** Take care to taxi from A6 to B via a partial right turn. Follow the GREEN line as depicted. Avoid taxiing onto RWYs.